

How configure RPM on SIMDASH

Some simulators like Assetto Corsa, are not compatible with some aspects of SIMDASH, this disadvantages are corrected with updates SIMDASH.

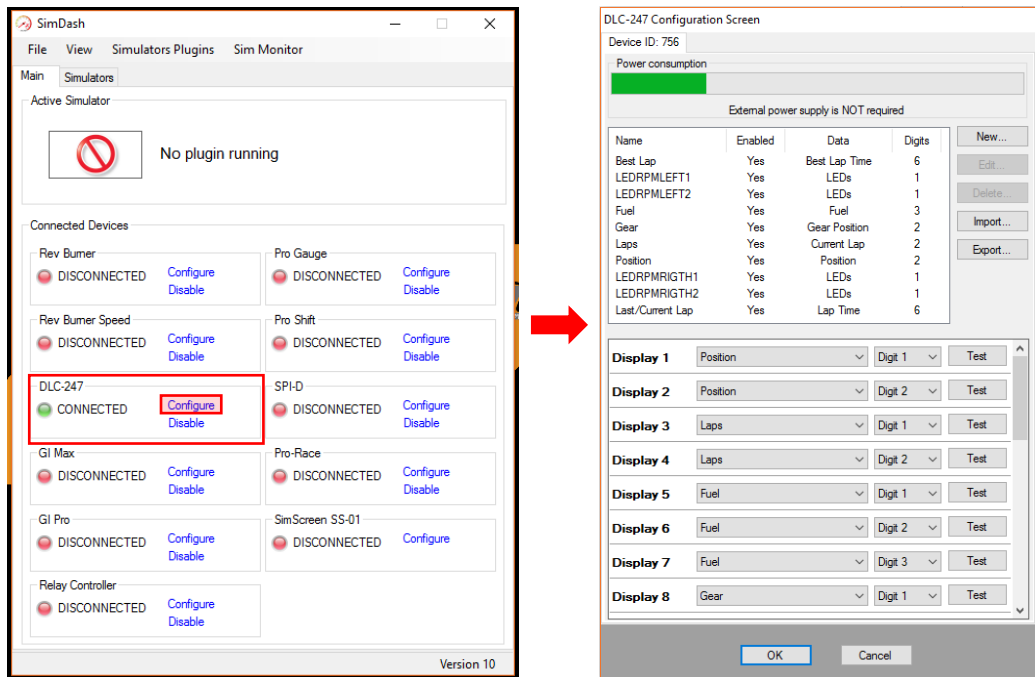
For more information visit the website of symprojects.com

Let's see some of the modifications that can be made in the XML file SIMDASH to correct some deficiencies.

The XML file that provides SRX, is set to indicate the percentage of RPM, which is compatible with most vehicles and simulators. But if this doesn't work, we can change it to direct RPM.

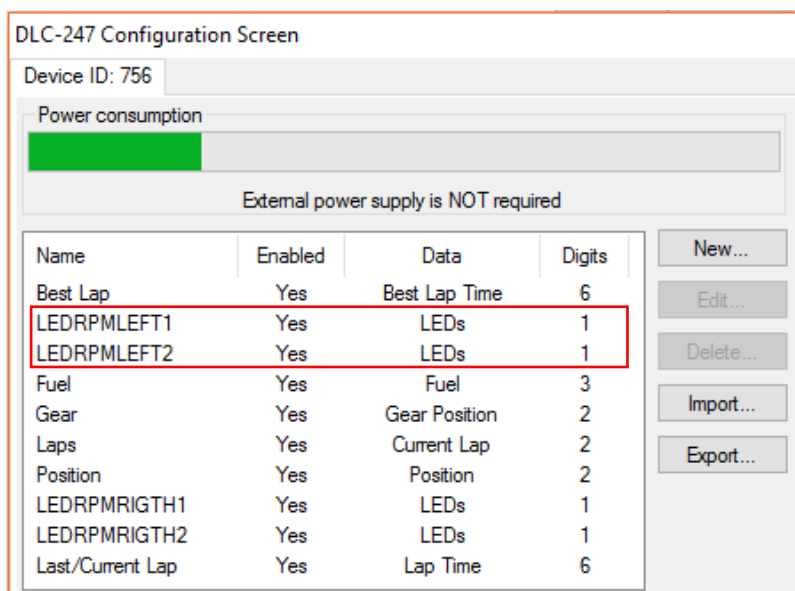
%RPM to RPM

First, we run the application SIMDASH, and click on Configure

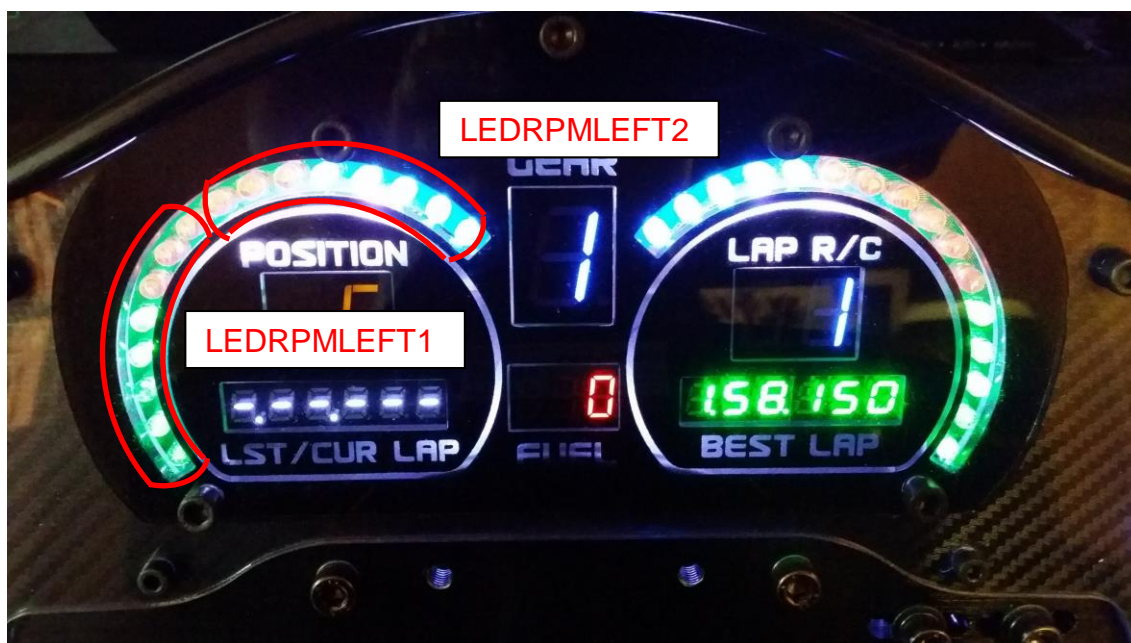


Appears a table with all the features of our GT DASH, where you can see LEDRPMLEFT1, LEDRPMLEFT2, LEDRPMRIGHT1 and LEDRPMRIGHT2.

LEDRPMLEFT1 and LEDRPMLEFT2



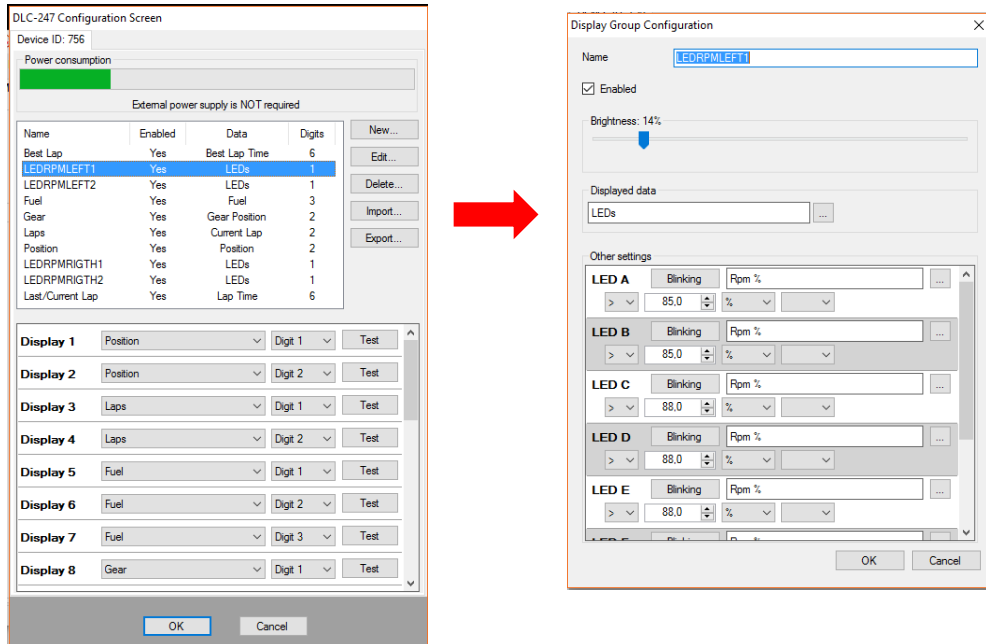
- LEDRPMLEFT1 is for the first 8 LEDs on the left side and LEDRPMLEFT2 is for the next 8 LEDs



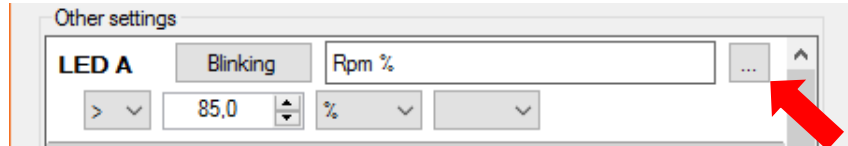
- obviously, LEDRPMRIGHT1 and LEDRPMRIGHT2 is for the right side.

The XML file SRX comes with settings %RPM, which must be changed if our simulator does not detect this value.

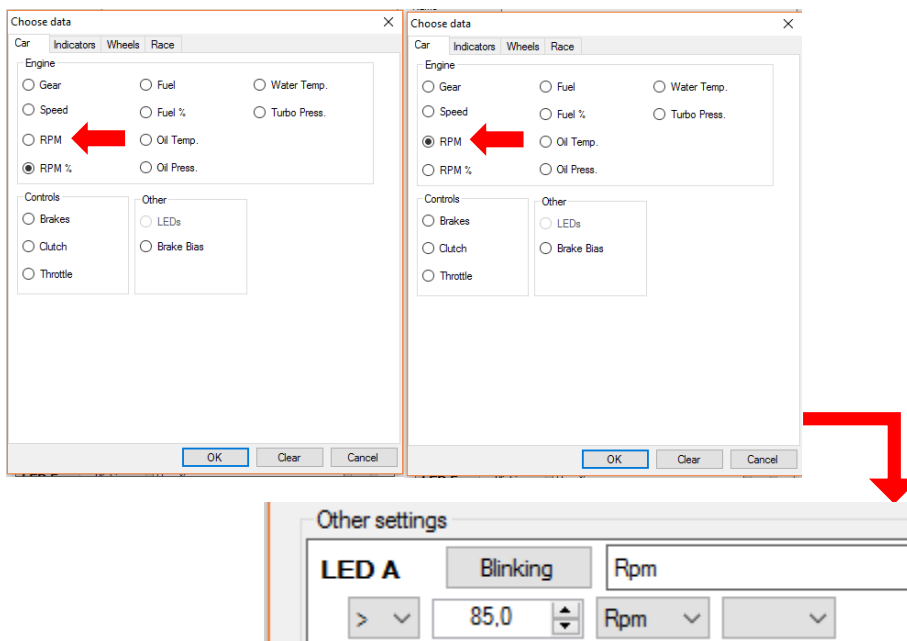
- First, select LEDRPMLEFT1 and click in "edit"



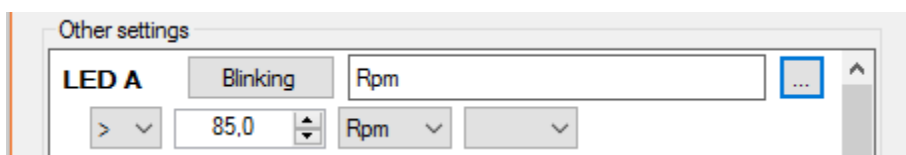
Now, we can configure all leds of LEDRPMLEFT1, one by one.



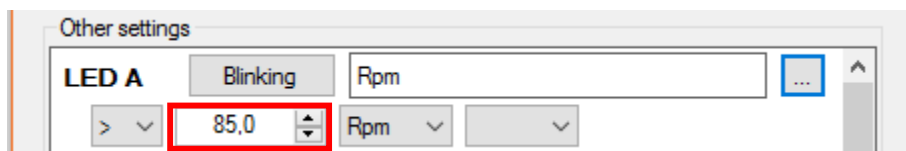
Click on “...” and select the option, and then press “ok”:



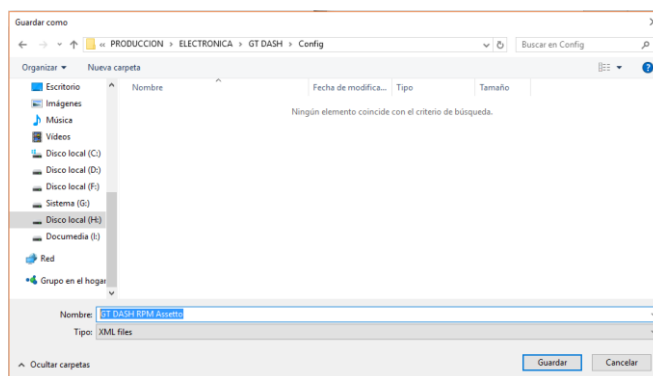
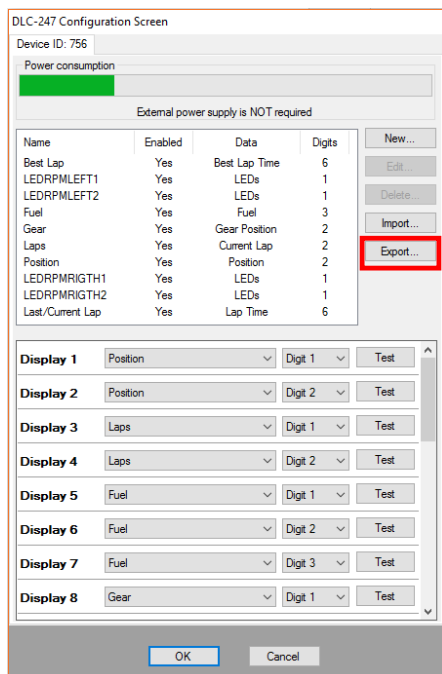
- We will see that, automatically, the field %RPM, now is Rpm.



- It only remains to change the number of RPM we want for each LED



Do not forget to save the new settings, for that, once set all parameters RPM in the config window, select "Export ..." and rename the file, so you will have the two configurations.



For any questions, please contact us: support@simracingxperience.com