

CSW GT DASH



Table of Contents

Getting Started	3
How to install.....	4
Software of Symprojects.com.....	5
Control buttons	10
Led Light.....	10
Other products.....	11

Welcome to the world of SimRacing Real Xperience

Getting Started

First we want to thank you for your reliance on SRX, we expect our products to your liking.

Here we will explain you how to operate your new CSW DASH GT, are three very simple steps that once completed will make you enjoy a new level in the SimRacing.

Our design GT DASH, consists of two parts:

- Control buttons for your simulation experience.
- Display of information that immerses you in the experience of the competition.

With the collaboration of SYMPROJECTS.COM, we have managed to our product is easy to install.

Below we show you how to do it.

How to install the GT DASH on Fanatec CSW

To install your GT DASH at the base FANATEC CSW (V1 or V2), you must remove the screws shown in the picture.

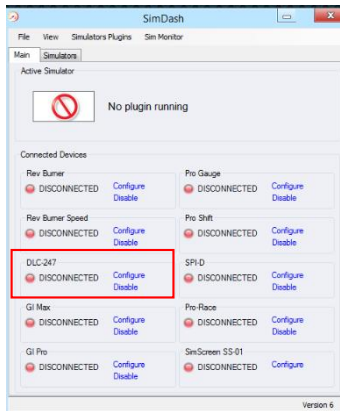


Then you put the GT-DASH of leaving the base in the hollow of the dashboard, to match the holes, then you Put the four screws.

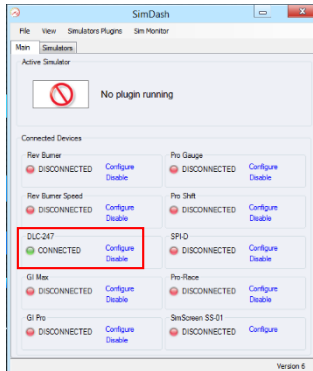


Software of Symprojects.com

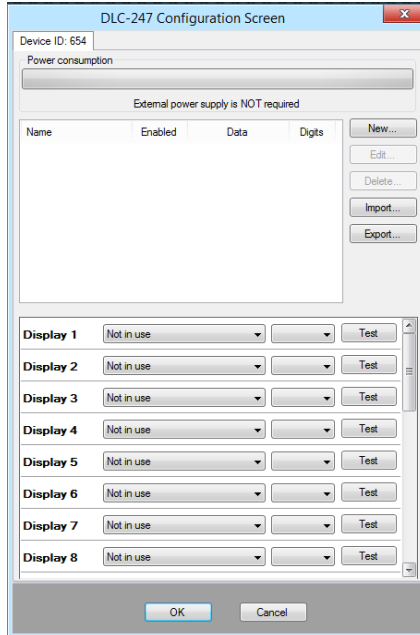
You have to download the software Symprojects.com, you will find in <http://www.symprojects.com/wp-content/SimDash.zip>, with this software you can configure the operation of your GT DASH displays, this setting is made by SRX, and you just have to import it.



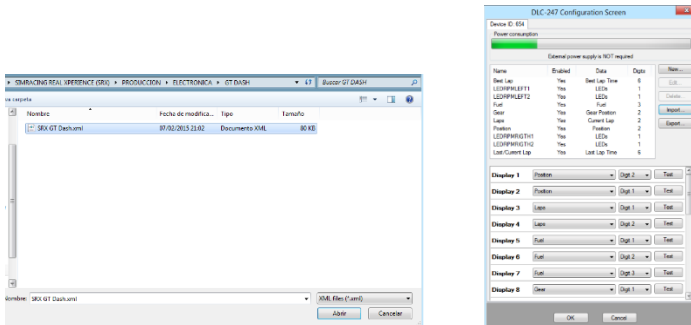
-Once installed you must click Configure in the box DLC247.



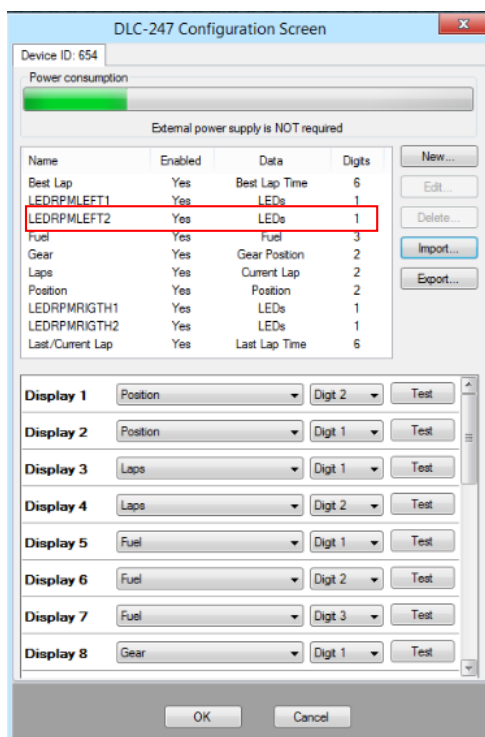
After you must click on IMPORT.



And a browser window will open, you must select the configuration file that you obtained from SRX after making the purchase of your GT DASH (SRX GT Dash.xml).



Once selected you click on open and the configuration will be loaded, after you click on ok.



You can configure the XML selecting the option you want to change and then clicking edit:

DLC-247 Configuration Screen

Device ID: 756

Power consumption

External power supply is NOT required

Name	Enabled	Data	Digits
Best Lap	Yes	Best Lap Time	6
LEDRPMLEFT1	Yes	LEDs	1
LEDRPMLEFT2	Yes	LEDs	1
Fuel	Yes	Fuel	3
Gear	Yes	Gear Position	2
Laps	Yes	Current Lap	2
Position	Yes	Position	2
LEDRPMRIGTH1	Yes	LEDs	1
LEDRPMRIGTH2	Yes	LEDs	1
Last/Current Lap	Yes	Lap Time	6

Buttons: New..., Edit..., Delete..., Import..., Export...

Display 1: Position, Digit 1, Test

Display 2: Position, Digit 2, Test

Display 3: Laps, Digit 1, Test

Display 4: Laps, Digit 2, Test

Display 5: Fuel, Digit 1, Test

Display 6: Fuel, Digit 2, Test

Display 7: Fuel, Digit 3, Test

Display 8: Gear, Digit 1, Test

Buttons: OK, Cancel



Display Group Configuration

Name: LEDRPMLEFT2

Enabled

Brightness: 20%

Displayed data: LEDs

Other settings

LED A: Blinking, Rpm %

LED B: Blinking, Rpm %

LED C: Blinking, Rpm %

LED D: Blinking, Rpm %

LED E: Blinking, Rpm %

Buttons: OK, Cancel

DLC-247 Configuration Screen

Device ID: 756

Power consumption

External power supply is NOT required

Name	Enabled	Data	Digits
Best Lap	Yes	Best Lap Time	6
LEDRPMLEFT1	Yes	LEDs	1
LEDRPMLEFT2	Yes	LEDs	1
Fuel	Yes	Fuel	3
Gear	Yes	Gear Position	2
Laps	Yes	Current Lap	2
Position	Yes	Position	2
LEDRPMRIGTH1	Yes	LEDs	1
LEDRPMRIGTH2	Yes	LEDs	1
Last/Current Lap	Yes	Lap Time	6

Buttons: New..., Edit..., Delete..., Import..., Export...

Display 1: Position, Digit 1, Test

Display 2: Position, Digit 2, Test

Display 3: Laps, Digit 1, Test

Display 4: Laps, Digit 2, Test

Display 5: Fuel, Digit 1, Test

Display 6: Fuel, Digit 2, Test

Display 7: Fuel, Digit 3, Test

Display 8: Gear, Digit 1, Test

Buttons: OK, Cancel



Display Group Configuration

Name: Laps

Enabled

Brightness: 20%

Displayed data: Current Lap

Other settings

Number of digits before decimal point: 2

Number of digits after decimal point: 0

Show decimal point

Show extra zeros

Blinking

Blink mode: Never blink

When displayed value is: 0.0

Buttons: OK, Cancel

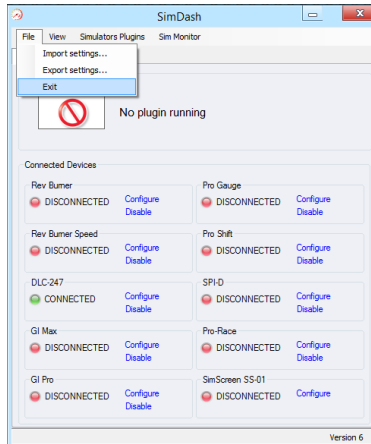
To save the changes you must export the file, you can overwrite the existing, or create a new one with a different name.

External power supply is NOT required

Name	Enabled	Data	Digits
Best Lap	Yes	Best Lap Time	6
LEDRPMLLEFT1	Yes	LEDs	1
LEDRPMLLEFT2	Yes	LEDs	1
Fuel	Yes	Fuel	3
Gear	Yes	Gear Position	2
Laps	Yes	Current Lap	2
Position	Yes	Position	2
LEDRPMRIGTH1	Yes	LEDs	1
LEDRPMRIGTH2	Yes	LEDs	1
Last/Current Lap	Yes	Last Lap Time	6

Buttons: New..., Edit..., Delete..., Import..., Export...

To save the settings, first run your sim application (iRacing, Rfactor...) check that all options are correct and then, you can close the program selecting File-> Exit.



Control buttons

Settings control buttons is plug and play and is done through the game settings.

Led Light

The illumination of your new GT DASH is long lasting LED, find a remote control your lighting GT DASH and operation manual.



Other products

INNOBOX PRO



INNOBOX BASIC



GENUINE PRO



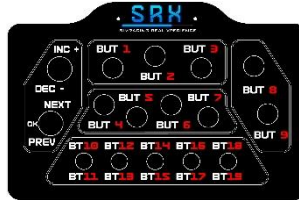
GENUINE BASIC



CUSTOM DASH



ACCESSORIES



SUPPLIES



CUSTOMER CARE

www.simracingxperience.com

mail:

support@simracingxperience.com

Content

1. CSW GT DASH.
2. USB CABLE 5 m.
3. RGB CONTROLLER.
4. Supply 12V.
5. User manual.



Visit us on the Web
www.simracingxperience.com